

FAIR WINDS

STUDENT'S BOOK

PART 2



Київ
2019

УДК 811.11

*Рекомендовано до друку кафедрою іноземних мов за професійним спрямуванням
Державного університету інфраструктури та технологій
Протокол №11 від 26.06.2019*

Рецензенти:

Тирон О.М. – канд. психол. наук, доцент ДУІТ;

Дишлева С.М. – доцент кафедри іноземних мов НПУ ім. М. Драгоманова.

Автори:

Корешкова С.П. – завідувач кафедри іноземних мов за професійним спрямуванням Державного університету інфраструктури та технологій, кандидат педагогічних наук, доцент

Діденко М.О. – старший викладач кафедри іноземних мов за професійним спрямуванням Державного університету інфраструктури та технологій

Камінська С.В. – старший викладач кафедри іноземних мов за професійним спрямуванням Державного університету інфраструктури та технологій

Сибірکو О.С. – старший викладач кафедри іноземних мов за професійним спрямуванням Державного університету інфраструктури та технологій

Fair Winds (Попутного вітру). Part 2: навчально-методичний посібник / С.П. Корешкова, М.О. Діденко, С.В.Камінська, О. С. Сибірکو. – Київ: Видавництво Ліра-К, 2019. – 88 с.

Посібник “Fair Winds” створено для студентів першого курсу факультету судноводіння Державного університету інфраструктури та технологій. Мета посібника – сприяти оволодінню англійською мовою як засобом професійного спілкування у майбутній професійній діяльності. Посібник розрахований на 90 аудиторних годин.

УДК 811.11

ISBN 978-617-7748-79-2

© Корешкова С.П., Діденко М.О.,
Камінська С.В., Сибірко О.С. 2019
© Видавництво Ліра-К, 2019

CONTENTS




Introduction		4
Unit 1	The Ship's Crew	5
Unit 2	The Vessel	14
Unit 3	Ship's Measurements	23
Unit 4	Types of Vessels	34
Unit 5	Safety Appliances	44
Unit 6	Emergencies	52
Unit 7	Personal Injuries	65
Unit 8	Maintenance of a Ship	76
References		88

INTRODUCTION

Speaking English (both General and Maritime) is an essential condition for all seafarers to get a job. The objective of the module is to develop communicative skills at General English and learn basics of Maritime English.

This Student's Book is designed for the first-year students of Navigation Department. It consists of eight units: The Ship's Crew; The Vessel; Ship's Measurements; Types of Vessels; Safety Appliances, Emergencies; Personal Injuries; Maintenance of a Ship.

Each unit has the following parts:

- | | | |
|-----------------|---|--|
| Target language | | This part provides the individual items of language that the students should learn. |
| Listening |  | Listening is a natural way to learn a language. There are a lot of recordings that are separate audio addition and after-listening activities that are designed for successful development of students' listening skills. |
| Reading |  | Reading is an essential part of language learning at every level because it supports learning in multiple ways. The students' purpose for reading is to obtain information about a subject they are studying. After-reading tasks are designed to develop reading comprehension. |
| Speaking | | The goal of language is communication and the aim of speaking in a language context is to promote communicative efficiency. There are activities for group and pair work. |
| Watching |  | References to video resources. |
| Self-assessment | | Students assess their own performance. They learn to objectively reflect on and critically evaluate their own progress and identify gaps in their understanding and capabilities. |

Approximate study time is 90 hours.

UNIT 1 THE SHIP'S CREW

Target language

AB	hold	to allocate
accommodation	hull	to include
auxiliary	loading	to operate
boatswain	machinery	to oversee
catering department	maintenance	to perform duties
chief steward	mooring equipment	to repair
complex	OS	to supervise
deck department	purifier	upkeep
discharging	skilled	watchstander
engine department	tackle	wiper
galley		



There is a lot of complex equipment on board modern ships so it is necessary to have skilled crews to operate the ships. The organization of a cargo ship crew is changing, but usually one can find three departments on such ships: the deck department, the engine department and the catering department.

The deck department includes navigators, a boatswain and sailors. We call navigators according to their rank on board ship: the Master (Captain), the Chief Officer (First Mate), the Second Officer (the Second Mate), the Third Officer (Third mate).

The Master of the ship is in command of the ship. He has the overall responsibility for the safe navigation of the ship, the safety and protection of the crew and passengers, the safe delivery of the cargo, and the efficient maintenance of the ship's equipment.

The Chief Officer is the Master's main assistant and the head of the Deck Department. He is responsible for loading, discharging and care of the cargo in port and at sea; the general maintenance of the deck and accommodation areas; and maintaining the navigation and safety equipment. He also assists the Master in the general administration on the ship. While at sea the Chief Officer normally keeps the 4-8 morning and evening navigation watch.

The Second Officer is often called the Navigating Officer and is responsible for the upkeep of navigational charts, navigational equipment and publications. He plans the voyage under the guidance of the Master and plots the course on the chart before the ship sails. At sea he keeps the navigational watch from 12-4 morning and night.

The Third Officer is responsible for the maintenance of the ship's safety equipment, including the fire-fighting and the life-saving equipment, under the guidance of the Chief Officer. He keeps the 8-12 mornings and evening navigational watch at sea.

All ships have a specialized training program and work schedule for hands-on job experience for the cadets. **The trainee or Deck Cadet** works under the guidance and command of the Chief Officer.

The Bosun, or Boatswain, is in charge of the Deck Ratings or crew. The Bosun takes orders from the Chief Officer for the maintenance work on deck and allocates work to the Deck Ratings. The Boatswain and sailors must keep the ship’s hull, holds and tackle in good condition.

The Engine Department consists of the Chief Engineer, the Second, Third and Fourth Engineers, some motormen, fitter and two or three electricians. They keep watch in the engine room and must maintain and repair its equipment.

The Chief Engineer is the Head of the Engine Department. He has the overall responsibility for the maintenance and smooth operation of all machinery including the engine room and deck machinery, electrical and electronics systems, mooring equipment, deck pumps and cranes.

The Second Engineer is in charge of engine room machinery and personnel and assists the Chief Engineer in the maintenance of all machinery in the engine room and critical machinery on deck.

The Third Engineer is responsible for auxiliary engines and other electrical equipment.

The Fourth Engineer is responsible for auxiliary machinery such as purifiers, pumps and related equipment.

The Electrical Officer is responsible for the maintenance of electrical equipment onboard the ship, including radio, navigation and safety equipment.

The Fitter assists in the general maintenance of the Engine Room. The various repair jobs including welding and gas work are usually carried out by the Fitter.

Engine Ratings assist in general maintenance and cleaning and contribute to smooth operations in the Engine Room.

On cargo ships, **the Chief Cook** and **the Stewards** form part of a Catering Department team with the responsibility for food preparation and service and general accommodation area cleanliness. They work under the guidance of the Master. On Passenger Ships the Catering Department will have more personnel to meet the requirements of the passengers.

Only well-qualified sailors can perform their duties properly. That’s why the crew’s training is very important.

Task 1. Match the jobs with the responsibilities they include.

- | | | | |
|--|------------------------|-------------|--|
| <ol style="list-style-type: none"> 1. The Master 2. The Chief Mate 3. The Second Mate 4. The Third Mate 5. The Chief Engineer 6. The Boatswain 7. The electricians 8. The fitter | is }
for }
are } | responsible | <ol style="list-style-type: none"> a. keeping the ship’s holds, deck and hull in good condition b. maintenance and smooth operation of all machinery c. the safety of the ship, cargo and crew d. various repair jobs such as welding and gas work e. keeping radio, navigation and safety equipment in good condition f. navigational instruments and charts g. cargo h. safety equipment |
|--|------------------------|-------------|--|

Task 2. Answer the questions.

1. How many departments are usually there on board cargo ship?

2. What are they?

3. Who is the head of the Deck department?

4. Who is the head of the Engine department?

5. What is the Master responsible for?

6. What are the Chief Officer's responsibilities?

7. Who is responsible for safety equipment?

8. How many people does the Engine Department usually consist of?

9. Who is responsible for the work of sailors?

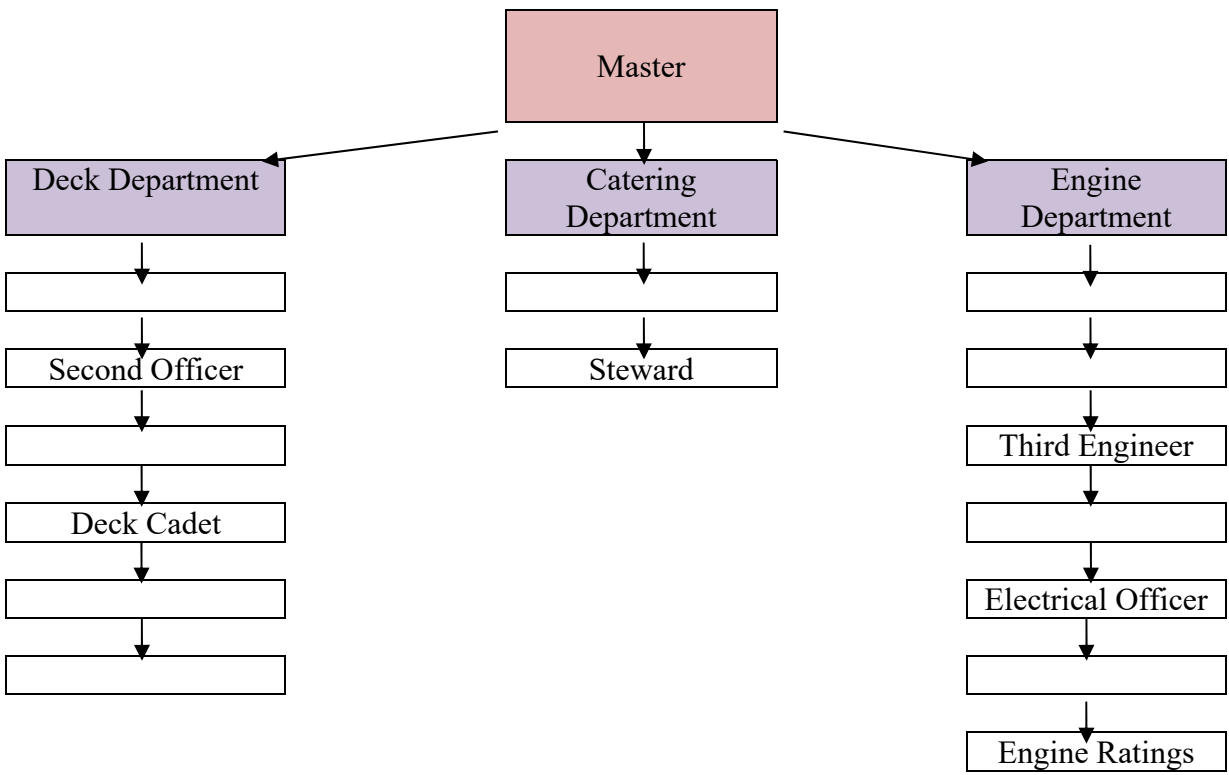
10. What are the Boatswain's duties?

11. What are the main duties of the sailors, Chief Engineer, fitter, etc.?

Task 3. Write the jobs in the correct position on the chart.

Bosun
Fourth Engineer
Chief Engineer
Second Engineer
Fitter

Chief Cook
Chief Officer
Deck Ratings
Third Officer





Task 4. Watch the video

https://www.youtube.com/watch?v=GX5YO_CDcK8

and schedule the Chief Officer's day.



0650	_____
0715	_____
0745	_____
0800	_____
0830	_____
0900	_____
1200	_____
1230	_____
1330	_____
1500	_____
1730	_____
0900-1800	_____
1800	_____
1900	_____
2200	_____
2330	_____

Do Chief Officer's duties depend on a type of a ship? Explain your answer.

Job Posting

A Turkey-based shipping company is hiring for the positions:



Chief Steward The responsibilities of chief steward are to:

- manage all aspects of vessel galley operations
- supervise the chief cook, steward's assistant, and the other personnel
- oversee cleaning and maintenance of the officers' quarters
- order and supervise the storage of all supplies and equipment

Boatswain The responsibilities of chief boatswain are to:

- determine the work that needs to be done daily and assign tasks to the crew
- oversee the operations of the deck crew
- oversee the ship's maintenance and upkeep, except for galley and engine room.

A boatswain must be certified as an AB (Able Seaman)

OS (Ordinary Seaman) The responsibilities of OS are to:

- work as a general deck hand and receive orders from the boatswain
- perform maintenance work of hull, cargo handling, mooring works
- stand in for the wiper if necessary
- assist ABs with their duties
- perform navigational or anchor watch when assigned by the Chief Officer

The OS must be able to pass the watchstander exam after two months.

Task 5. Fill in the table.

Duties	
OS	AB

Task 6. Tell if the sentences are true or false.

1. The purpose of the advertisement is to outline available positions for a ship's crew.
2. Chief steward will be under supervision of the chief cook.
3. OS must be able to perform wiper's duties.
4. Boatswain must have watchkeeping certificate.
5. The steward's assistant orders supply for the galley.
6. An AB is ranked above OS.

Task 7. Match the words with the definitions.

1. steward department	a. the person who supervises meal preparation
2. to perform	b. to carry out, accomplish, or fulfil (an action, task, or function)
3. steward's assistant	c. the station responsible for meals and housekeeping
4. chief cook	d. a crew member who keeps watch
5. maintenance	e. the person who directs personnel in the steward department
6. to assist	f. an entry-level position in the steward department
7. watchstander	g. the act or process of keeping something in working condition
8. chief steward	h. to help (someone), typically by doing a share of the work

Task 8. Complete the table with a deck cadet's duties.

Deck cadet's duties

Deck work and maintenance	Port work and cargo operations	LSA and firefighting equipment	Mooring operations
Pilotage	Keeping watch (including ISPS watch)	Navigation	Paperwork

<ul style="list-style-type: none"> ▪ to relay the orders of the Master to the ratings during mooring ▪ to assist the 3rd Mate with paperwork ▪ to usher in various officials (PSC Surveyors, Coast Guard, Medical/Health Inspectors etc.) to the ship's office 	<ul style="list-style-type: none"> ▪ to monitor the entry and exit points of the vessel during ISPS watch ▪ to check expiry dates of life jackets, life bouys, life belts, etc.
--	---

<ul style="list-style-type: none"> ▪ to update the Muster lists and the cabin key log ▪ to check safety equipment for any defects ▪ to check IDs and log in the ship's 'Visitor's Log' ▪ to keep bond store, crew declaration etc. stamped, signed and ready with a fair number of photocopies ▪ to make photocopies of various lists ▪ to carry out repair work of LSA ▪ to keep a log of all the persons entering and leaving the vessel during ISPS watch ▪ to report of any abnormalities within the deck 	<ul style="list-style-type: none"> ▪ to assist the ratings in rigging the pilot ladder ▪ to assist the ship's bosun ▪ to assist a certified officer in keeping bridge watch ▪ notice down precise timings of the start and end of loading/unloading ▪ to chip, paint, grind etc. ▪ to ensure overall cleanliness of the deck ▪ to monitor the cargo being loaded/unloaded ▪ to email the company for ordering new safety equipment ▪ to assist the duty officer with the different pilotage paperwork ▪ to check tank soundings on a regular basis ▪ to lower the gangway for the pilot to board
---	---

Task 9. Read the sentence pairs. Choose which word best fits each blank.

1. boatswain / wiper
 - a. The _____ cleans and maintains the engine room.
 - b. A _____ is in charge of the deck crew.

2. AB / OS
 - a. A sailor with no experience starts as an _____ .
 - b. Becoming an _____ requires passing an exam and many hours at sea.

3. Chief Steward / Second Officer
 - a. The _____ supervises the chief cook, steward's assistant, and the other personnel.
 - b. It is the _____'s responsibility to deal with navigational equipment and charts.



Task 10. Listen to a conversation about a job interview. Complete the conversation. Imagine you are an interviewer, think of some more questions to continue the interview.

- Interviewer: Please tell us about your _____, Mr. Wales.
- Applicant: I just advanced to _____ . I _____ on a bulk ship out of Panama.
- Interviewer: Congratulations. When did you take the AB _____ exam?
- Applicant: _____ the exam in August, and received my certificate last month.
- Interviewer: Great. _____ please describe your duties as an OS?
- Applicant: I mostly performed _____ and cleaning duties _____ deck.
- Interviewer: Did you get any other training you'd like _____ about?
- Applicant: I passed the _____ exam in June.